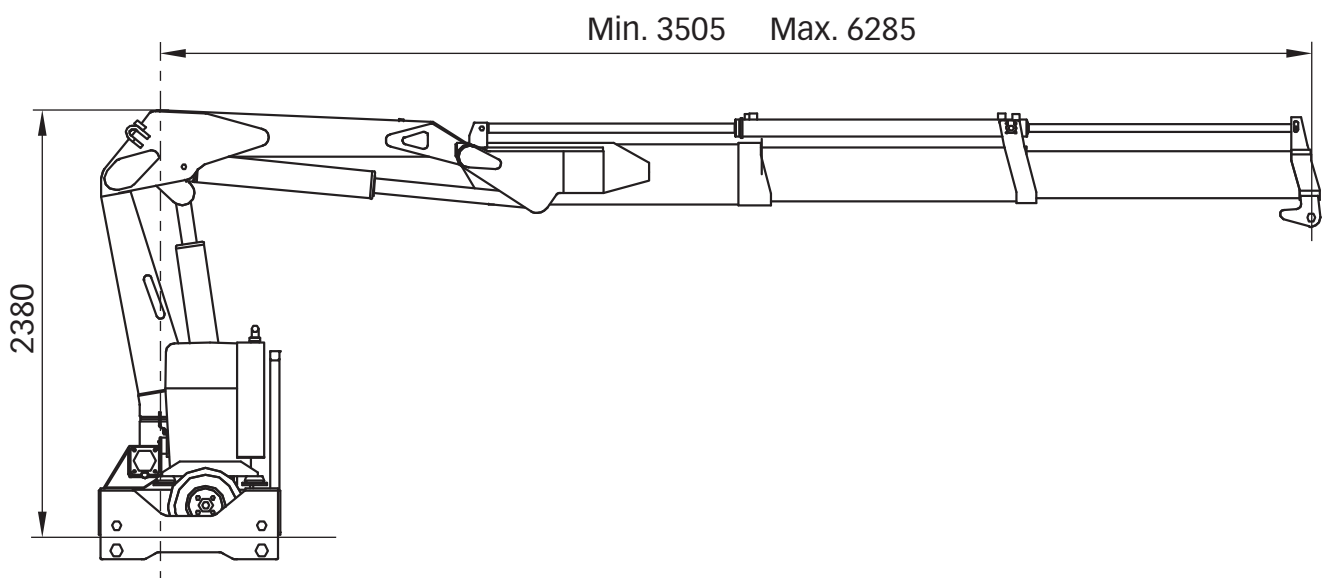


Hiab 165 R

Capacity 16 tm



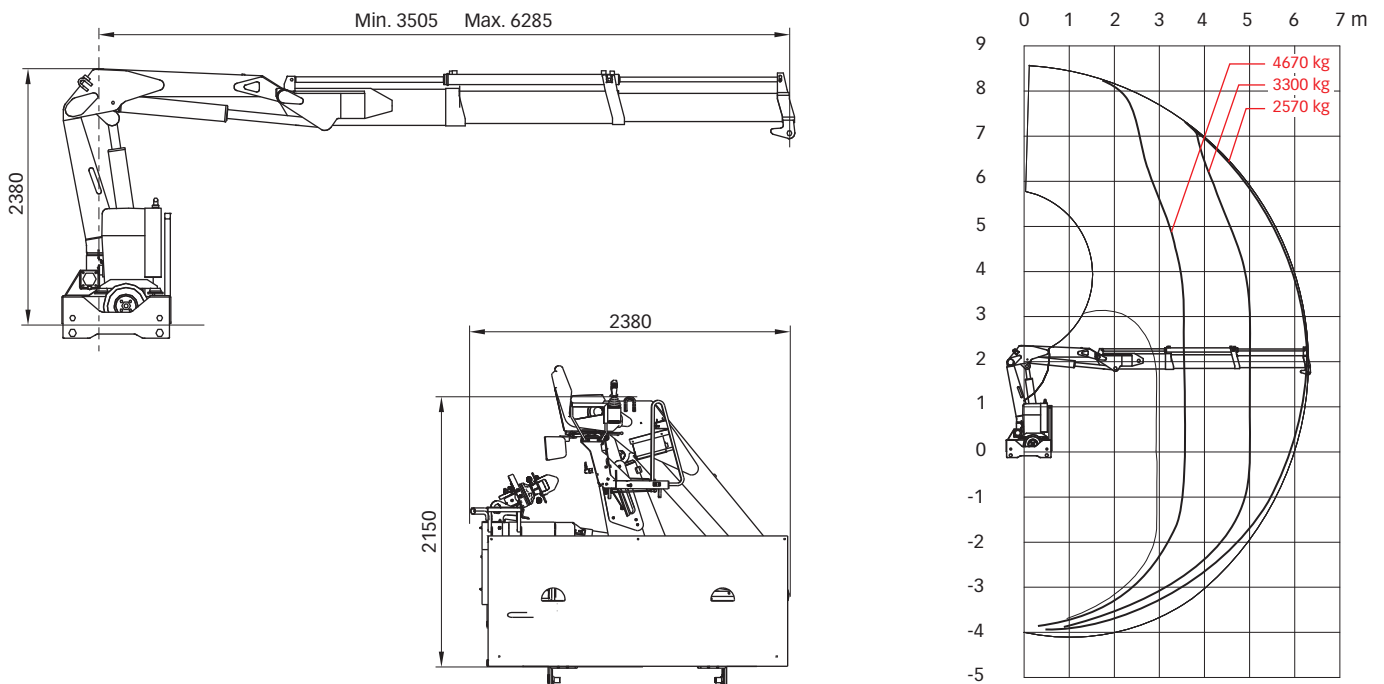
Hiab 165 R Basic data

Technical data

	165 R F-1	165 R F-2	165 R F-3
Max. lifting capacity (kNm)	162	159	154
Outreach - hydraulic extensions (m)	5.0	6.3	7.9
Outreach / lifting capacity, standard (m / kg)	3.5 / 4770	3.5 / 4670	3.5 / 4570
	5.0 / 3300	5.0 / 3300	5.0 / 3220
	-	6.3 / 2570	6.3 / 2570
	-	-	7.9 / 1980
Slewing angle	410°	410°	410°
Height in folded position (mm)	2150	2150	2150
Width between side boards (mm)	2380*	2380*	2380*
Length of chassis with hydraulic stabilizers (mm)	1350	1350	1350
Weight - "standard" crane without stabilizers (kg)	2690*	2860*	3010*
Weight - stabilizer equipment (kg)	540	540	540

*Width between side boards and weight are based on a track width of 2250mm

Hiab 165 R F-2



Disclaimer. Hiab cranes have been built to meet the highest standards of safety and service life and have been thoroughly tested. Strength calculations for this model have been carried out in accordance with DIN 15018 in fatigue class B3. Cargotec's certified Quality Assurance System complies with ISO 9001. Some of the items in our literature may be extra equipment. Certain applications may require an official permit. We reserve the right to change technical specifications without prior notice. Hiab cranes produced for EU-countries are CE-marked and comply with the European Standard EN 12999.

Cargotec improves the efficiency of cargo flows by offering solutions for the loading and unloading of goods on land and at sea – wherever cargo is on the move. Cargotec's main daughter brands for cargo handling Hiab, Kalmar and MacGregor are global market leaders in their fields. www.cargotec.com